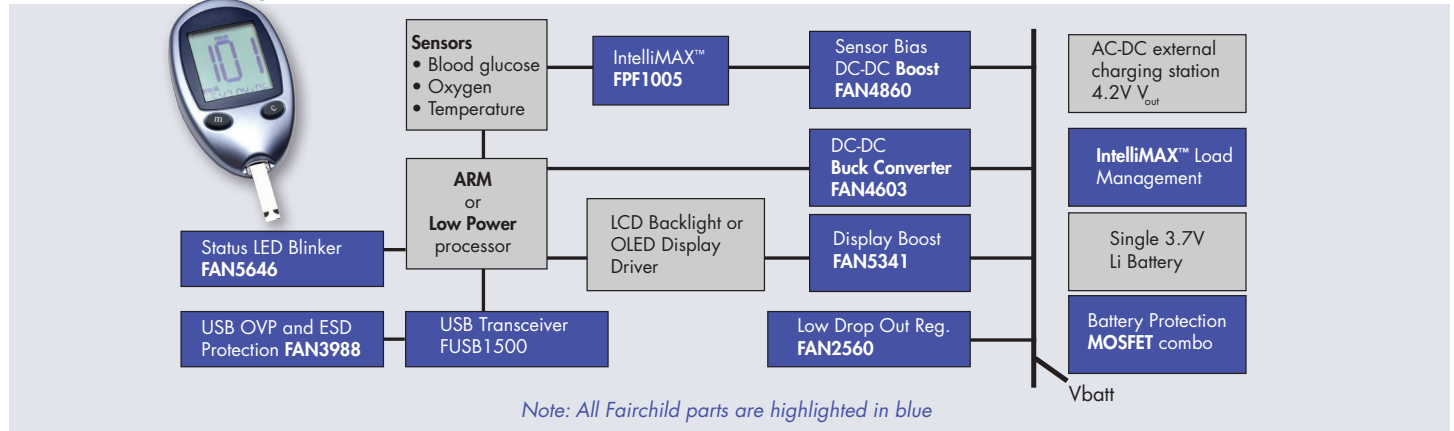


# PORTABLE MEDICAL SOLUTIONS

## Fairchild's Offering



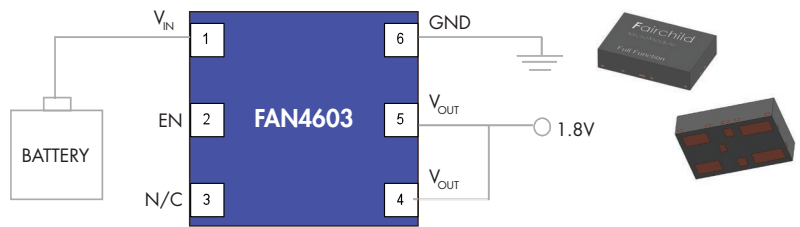
### Power

**FAN4603** - 500mA, Integrated Synchronous DC-DC Buck Converter

- Solder and play converter - no external components required
- 2.3V to 5.5V input voltage range
- 4mm x 2.5mm x 1mm MLP package

**IntelliMAX™** - FPF1005

- Advanced load management products
- 1.2V to 5.5V input range, 6V<sub>IN</sub> abs max.
- 2 x 2 x 0.8 MicroFET package



Typical Application Circuit

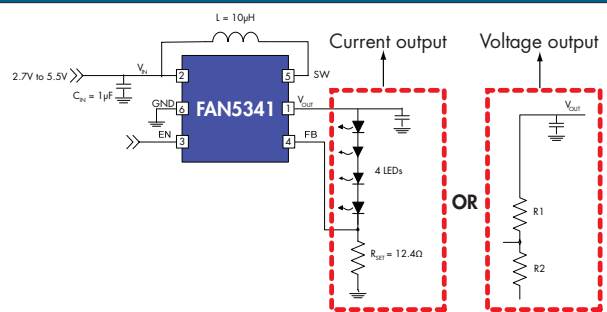
### Display

**FAN5341** - Asynchronous Serial LED Driver for 3 to 5 WLEDs

- Up to 85% efficiency
- 1.2MHz switching frequency
- Passive matrix OLED capable driver
- Program up to 32 different LED brightness levels

**FAN5646** - Programmable Indicator "Soft" LED Blinker

- LED soft blink with logarithmic fade up and down
- Follow or repeat pattern modes when apps processor powered down
- TinyWire™ digital interface to program different lighting patterns



Typical Application Circuit

### USB

**FUSB1500** - USB PHY with Charger Detection

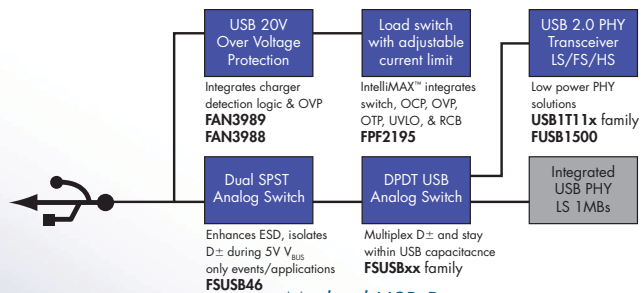
- Supports 12Mbps and 1.5Mbps USB2.0 speeds
- Single ended (SE) mode signaling

**FAN3988** - USB/Charger Detector with OVP/UVIP indication

- V<sub>BUS</sub> supply: 2.7V to 20V
- C<sub>ON</sub> of 1.5pF

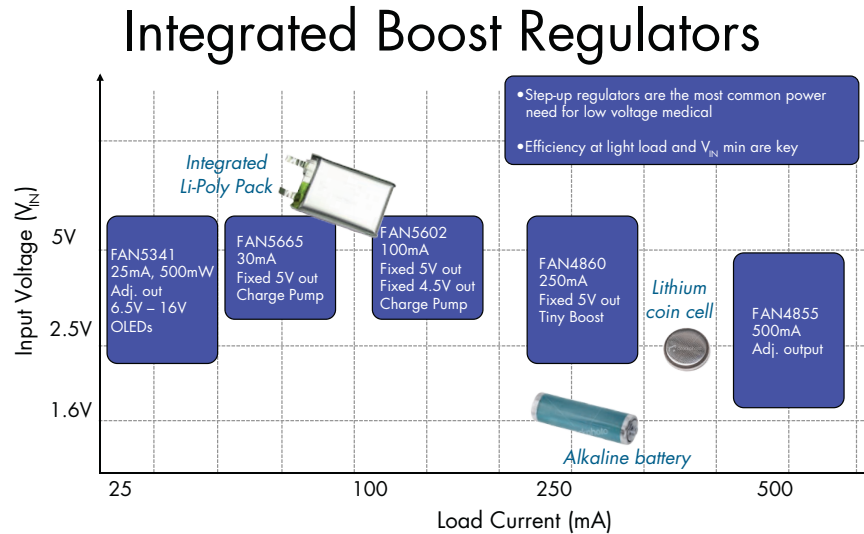
**FSUSB42** - High Speed USB2.0 DPST Switch with Dedicated Charger Port Detection

- C<sub>ON</sub> of 7.0pF
- Low power consumption 1µA max



Medical USB Port

For data sheets, application notes, samples and more, please visit: [www.fairchildsemi.com](http://www.fairchildsemi.com)



### IntelliMAX™ Family of Advanced Load Switches

Functionality	Product	Package Type	$V_{IN}$ Range (V)	$R_{ON}$ (m $\Omega$ ) Typ.	Current Limit Minimum (mA)
Slew rate control	FPF101x	CSP, MLP 2x2	0.8 – 5.5	20/50	Slew rate control
Value current limiting	FPF200x	SC70-6	1.8 – 5.5	700	50, 100
Reverse current protection	FPF214x / 218x	MLP 2x2 / CSP	1.8 – 5.5	110, 150	200, 400
Value reverse current protection	FPF210x	SOT23-5	1.8 – 5.5	125	200, 400
Reverse current protection (0.15A to 1.5A)	FPF216x / 219x	MLP 2x2 / CSP	1.8 – 5.5	110	150 – 1500 Adj.
Value 0.15A to 1.5A reverse current	FPF212x	SOT23-5	1.8 – 5.5	125	150 – 1500 Adj.
$\mu$ TCA over-current protection (Full feature)	FPF216x	MLP 2x2	1.8 – 5.5	120	150 – 250 Adj.
Output over-voltage protection (w/Schottky)	FPF217x	Power33	1.8 – 5.5	125	200
High precision current limiting (within 5-15%)	FPF221x	MLP 2x2	1.8 – 5.5	120	100 – 250 Adj.
High input range (2.8 to 36 $V_{IN}$ ) & up to 2A OCP	*FPF270x	MLP 3x3 / SO8	2.8 – 36	100	500 – 2000 Adj.

\* Under development

### Dual MOSFETs in MicroFET™ Packaging (2mm x 2mm x 0.8mm)

Product Number	$V_{DS}/V_{GS}$ (V)	Max. $R_{DS(ON)}$ @ 4.5V (m $\Omega$ )	Configuration	Typical Application
FDMA1024/1028NZ	20/(8/12)	54/68	Dual N	Power Switching
FDMA2002NZ	30/12	123	Dual N	Power Switching
FDMA1027P/1027PT	20/8	120	Dual P	ChargeFET/Switching
FDMA1025P	20/12	155	Dual P	ChargeFET/Switching
FDMA1029PZ	20/12	95	Dual P	ChargeFET/Switching
FDMA1023PZ	20/8	71	Dual P	ChargeFET/Switching
FDMA6023PZT	20/8	60	Dual P	ChargeFET
FDMA3023PZ	30/8	90	Dual P	ChargeFET

"Z" suffix denotes integrated zener protection for rugged medical application requirements

For additional information, please visit:  
[www.fairchildsemi.com/applications/medical](http://www.fairchildsemi.com/applications/medical)